







JSW Steel Plant, Vijayanagar Works, Karnataka



JSW Steel Plant, Vijayanagar Works, Karnataka

Content

JSW Group	6
JSW Steel	8
Setting Benchmarks	10
JSW Vision & Mission	12
JSW Value	13
JSW Steel Products	15
JSW Hot Rolled Steel	16
JSW Cold Rolled Steel	20
JSW Electrical Steel	24
JSW Special Alloy Steel	28
JSW Neosteel	32
JSW Wire Rods	36
JSW Neostrands	40
JSW Steel Coated Products Ltd.	46
JSW Everglow	46
JSW Colouron+	48
JSW Pragati+	50
Indradhanush	52
JSW Silveron+	54
JSW Vishwas	56
JSW Radiance	58
JSW Magsure	60
JSW Platina	62
JSW Galvos	64
JSW Galveco	66
JSW Avante	68
Sustainability	72
Awards & Recognition	74

Meet JSW

JSW Group is a \$24 billion global conglomerate and one of India's most diverse and dynamic business entities. With its headquarters in Mumbai, the Group has a significant presence across steel, energy, cement, infrastructure, paints, electric mobility, defence, copper, venture capital, and sports. JSW Steel, its flagship company, is ranked among the world's leading steel manufacturers. JSW Energy is advancing India's clean energy ambitions, while JSW Cement and JSW Paints are redefining sustainability in construction and coatings. Beyond business, JSW invests in sports, technology, and community-driven initiatives, fostering inclusive growth. With operations spanning India, the US, Europe, and Africa, JSW is shaping a sustainable and progressive future.



40000+

People

300+

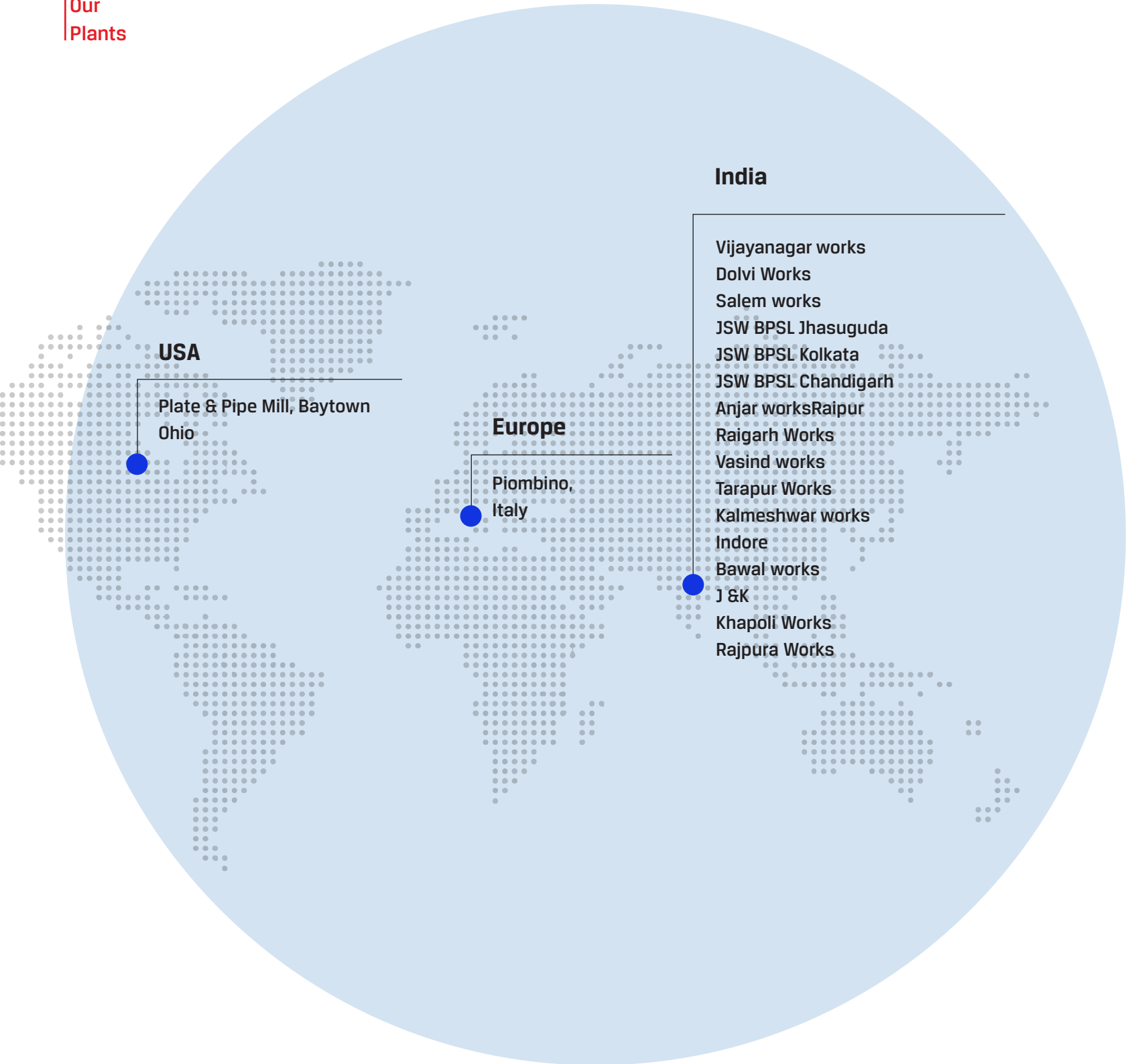
Offices

17

Plants

3

Continents



Meet JSW Steel

JSW Steel is the flagship business of the diversified, US\$ 24 billion JSW Group. As one of India's leading business houses, JSW Group also has interests in energy, infrastructure, cement, paints, realty, e-platforms, green mobility, defence, sports, and venture capital. Over the last three decades, JSW Steel has grown from a single manufacturing unit to become India's leading integrated steel company with consolidated crude steel capacity of 35.7 MTPA including 1.5 MTPA in US. Domestic crude steel capacity stood at 32.5 MTPA and will reach at 34.2 MTPA post full commissioning of expansion project by wholly owned subsidiary, JSW Vijayanagar Metallics Ltd. (JVML) at Vijayanagar. Its next phase of growth will take consolidated capacity to 43.5 MTPA over next three years. The Company's plant in Vijayanagar, Karnataka is the largest single-location steel-producing facility in India with capacity of 17.5 MTPA (including under commissioning).

JSW Steel has always been at the forefront of research and innovation. It has a strategic collaboration with global leader JFE Steel of Japan, enabling JSW to access new and state-of-the-art technologies to produce and offer high value special steel products to its customers. These products are extensively used across industries and applications including construction, infrastructure, automobile, electrical applications, and appliances.

JSW Steel is widely recognized for its excellence in business and sustainability practices. Some of these recognitions include World Steel Association's Steel Sustainability Champion (consecutively from 2019 to 2024), Leadership Rating (A-) in CDP climate change disclosure and A in CDP Water Disclosure (2023), Deming Prize for TQM for its facilities at Vijayanagar (2018), and Salem (2019). It is part of the Dow Jones World and Emerging Markets Sustainability Indices (DJSI), and included in S&P Global's Sustainability Yearbook (consecutively from 2020 to 2024). JSW Steel is ranked 8th among the top 35 world-class steelmakers, according to the 'World-Class Steelmaker Rankings' by World Steel Dynamics (WSD), based on a variety of factors. As a responsible corporate citizen, JSW Steel's CO2 emission reduction goals are aligned with India's Climate Change commitments under the Paris Accord.

Did You Know?



JSW Steel has received Responsible Steel Certification for four manufacturing sites
- Vijayanagar, Dolvi, Tarapur and Salem



JSW Steel Plant, Vijayanagar Works, Karnataka

First continuous annealing line in India

Widest Cold Rolling Mill (upto 1870 mm width)

India's Largest Coated Steel producer

First Licensee Galvalume® producer in India

JSW Steel Salem Works is the largest integrated alloy and special steel plant in India

One of the Widest Hot Strip Mill in India: 25.4 x 2150 mm

India's Most Modern and Largest Vertical Caster - 300/260/220 x 2200 mm

One of the India's largest Blast -4.5 MTPA at Dolvi

India's only Multi-Radii Bloom Caster (12/16/30 m) operational at Salem Works

ZERO EFFLUENT discharge for greener & cleaner environment

1.5 million trees planted at Vijayanagar Works, transforming the area into a green oasis



JSW Steel Plant, Salem, Tamil Nadu

Our vision, mission and values drive everything we produce, every business decision we make, and every relationship we enter into.

Our vision is to create sustainable growth by balancing the use of natural resources with social development. Our mission is to build tangible value while being socially and environmentally responsible by conducting our business operations with ethics, transparency and accountability.

Pillars

- We fulfil our vision and mission based on a foundation of:
- Dynamic leadership
- Adherence to our core values
- A well-articulated Enterprise Risk Management framework.
- Practices that seek to sustain and enhance our long-term competitive advantage, alongside care for society and the environment.

AGILITY - In a world where change is the only constant, agility is the x-factor that defines success. Agility is to maneuver the uncertain, constantly re-think and reinvent. Agility is to be able to view change as an opportunity, not a threat.

COURAGE - Courage is to overcome fear, trepidation, and every other emotion that holds you back. Courage is to set out in uncharted waters and keep going till you reach your goal. Courage is to do the right thing even when you are not answerable to anyone.

COMMITMENT - Commitment is often the differentiating factor between success and failure. Often times, holding on and staying committed to an idea or a goal in the face of adversity is what ensures the win. Commitment builds trust and community.

COMPASSION - Each one of us is unique, and a sum total of varied circumstances. To not judge and to be able to show love and compassion is a form of real strength. After all we are part of one universe, which we need to make a better place for each one of us.

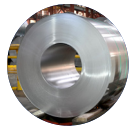
COLLABORATION - Together, we can do so much more than what can be achieved individually. Ideas take on new forms when transplanted into different minds. Apart from being so much more fun to do things together, collaboration fosters growth and helps everyone win.



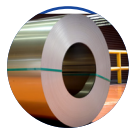
JSW steel Plant , Dolvi , Maharashtra



Hot Rolled Steel



Cold Rolled Steel



Electrical Steel



Special Alloy



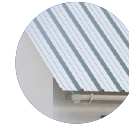
TMT Bars



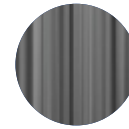
Wire Rods



LRPC Strands



Galvanised Products



Galvalume Products



Colour Coated



Tin Plates

JSW Steel manufactures superlative Hot Rolled (HR) coils at its Hot Strip Mills (HSM), situated at Vijayanagar, Karnataka, and at Dolvi, Maharashtra. The production of these coils involves the use of state-of-the-art equipment and manufacturing processes that ensure products of the highest quality. At Vijayanagar, HSM-I has a commissioned capacity of 3.2 MTPA and HSM-II has commissioned capacity of 5 MTPA, equipped with sizing presses and an automatic line inspection facility. At Dolvi, HSM-I has a commissioned capacity of 3.5 MTPA and HSM-II has commissioned capacity of 5 MTPA

HSM 2 is one of the widest Hot Strip mills in India, capable of rolling up to 2150 mm.

The Dolvi unit CSP uses a combination of the advanced Conarc Process and Thin Slab Casting technology, which facilitates the production of HR coils that are superior in quality due to their thinner gauges and finer surface quality. Additionally, the convenient coastal location of the Dolvi unit also allows easy access to the plant and smoothens the import and export of raw materials and finished goods. HR Steel is available in different forms – coils, CTL (Cut to length), & Plates. JSW Steel supplies only coil form and CTL form which is branded as JSW Trusteel.

Advantages

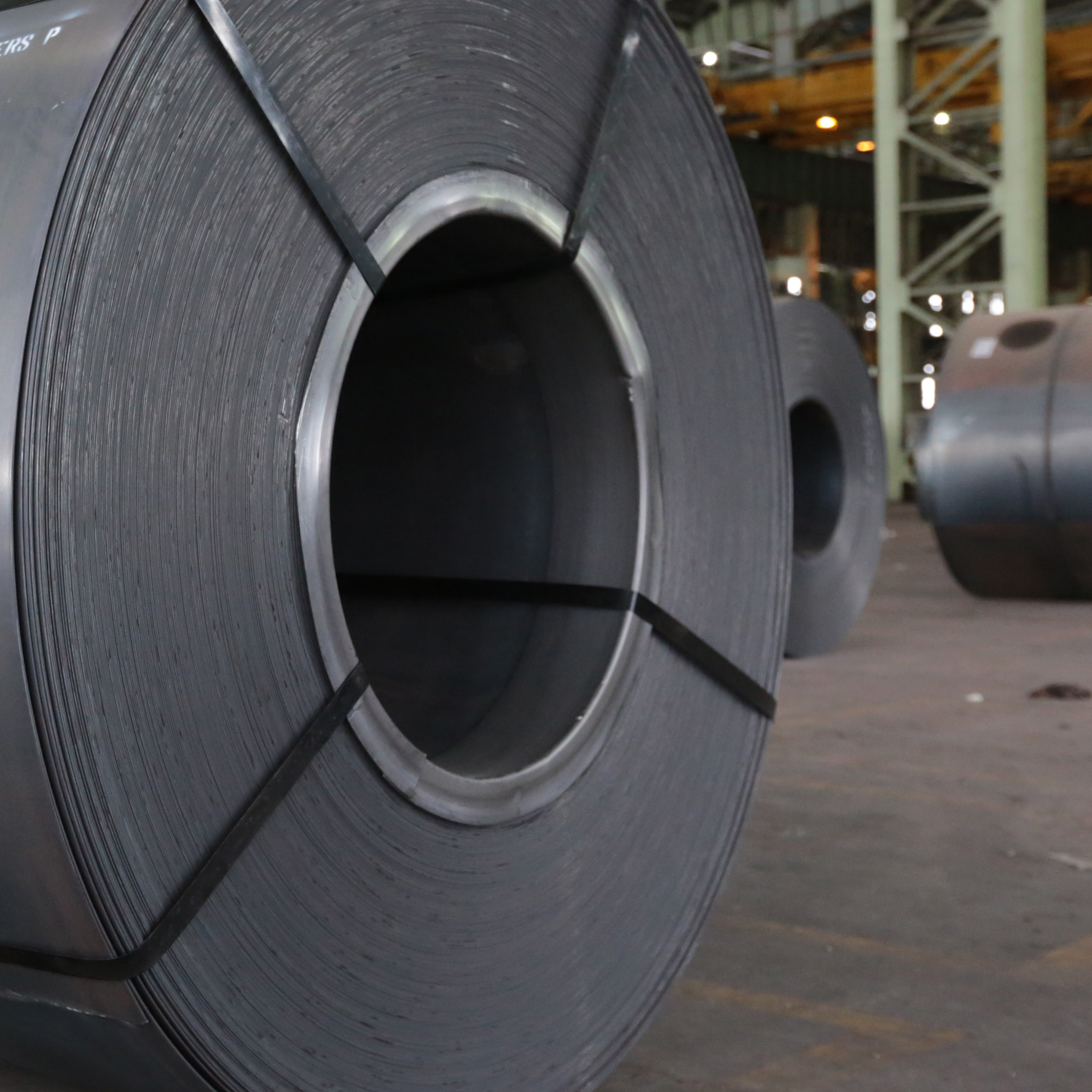
- The widest range of hot rolled products, with thickness up to 25.4 mm, width up to 2050 mm and coil weight up to 36 mt
- The widest Hot Strip Mill in India, capable of rolling up to 2150 mm
- A rare product portfolio, perfect for line pipe applications, with the capability to produce X70 grade up to 20mm thickness
- Ultra-low carbon for IF & IFHS grade
- Made from dual-phase steel requiring divide quench cooling, which makes it ideal for critical automobile applications.
- Desired cooling patterns and rates of control of microstructure achieved with our level 2 coiling temperature control
- A higher reduction in finishing stands, with transfer bar thickness up to 55 mm

PERNODOL CYL. INDR
LTD

CYL NO-14607802
HIT NO-621796
SIZE-2.9X1600MM
DATE-18 6240 2008

PERNODOL LTD
PERNODOL CYLINDERS (P)
LTD
14607802
18 6240 2008

14607802



ERS P

JSW's Cold Rolled Closed Annealed (CRCA) Coils and Sheets are produced through the cutting -edge Cold Rolling Mills (CRM) at Vijayanagar. The 4.05 MTPA CRM's modern facilities, advanced operational technologies, strict inspection processes and integrated quality control, ensures an excellent product. JSW's CRCA is manufactured in Deep Drawing, Extra Deep Drawing, Interstitial Free Steels and High Strength grades, which are conformed to IS, JIS, EN, ASTM and JFS and standards. Dimensional accuracy is guaranteed by an automatic thickness control system using advanced numerical models. Easy formability, Better quality surface finish, Consistent surface texture with the optimum balance between texture (for paint keying) and smoothness (for image distinction) makes JSW's CRCA the product of choice for automobiles, appliances, furniture and many other applications

- Technical Collaboration with JFE Steel Corporation, Japan to improve Plant, Process and Products
- Development of CR & Coated (GA, GI) for automotive steel and other high end applications
- Jointly provide auto customers with products & services including application engineering solutions
- Proven overseas technology from SMS Siemag for PLTCM and JP Steel Plantech for CAL & CGL

Did You Know?



The Cold Rolled Closed Annealed Coils and Sheets are manufactured using the cutting-edge Cold Rolling Mills at Vijayanagar. With a capacity of 3.3 MTPA, the CRM facility offers state-of-the-art facilities, advanced operational technologies, a robust due diligence process and an integrated quality control mechanism.



Advantages

- Reduced lead time
- Quicker serviceability from CAL route.
- True customization
- Customized sizes through service center at Vijaynagar, Pune, Palwal, and Chennai & Ahmedabad.
- Master workability
JSW's cold rolled products have splendid formability and minimal deviation in mechanical properties due to company's innovative technologies, and integrated quality control system extending from raw materials to the final product and newly constructed and modernized facilities.
- Superior surface quality and dimensional accuracy
Dimensional accuracy is guaranteed by an automatic thickness control system using advanced numerical models, modern facilities, advanced operational technologies, strict inspection, and integrated quality control ensure excellent surface quality.
- Wide range of product standards.
JSW cold rolled products meet a wide range of product standards, such as BIS and other international standards, including JFS standards.
- Wide range of sizes
Wide range of thickness and width options.
- Superior shape
Flatness control ensures superior strip flatness.



JSW Steel is always evolving to contribute to the efficient and responsible management of energy and environment conservation. Cold rolled non grain oriented electrical steel from JSW Steel enables designers to increase the energy efficiency of electrical systems, thus playing an important part in the sustainability of energy resources. With this purpose at the core, JSW Steel is committed to providing customers a truly Indian Electrical Steel of global quality that sets new & boosted energy efficiency standards.

Our state-of-the-art manufacturing facility at Vijayanagar is set to produce and market a comprehensive range of CRGO products, encompassing both conventional and high permeability variants. This will be the first greenfield integrated CRGO manufacturing facility in India, setting a new benchmark in the industry. Cold Rolled Grain Oriented Electrical Steel (CRGO) widely used in transformers for power generation, transmission and distribution and is a critical value-added speciality steel at the core to achieve energy efficiency of electrical systems. CRGO is mainly used in Power Transformers, Distribution transformers, furnace rectifiers, electrostatic precipitators, Traction Transformers, series and shunt reactors etc.

Applications

- Electrical motors
- Power generators and alternators
- Pumps
- Domestic Appliances
- White Goods
- Transformers
- UPS, Stabilizers and Chargers

Advantages

- Superior Electromagnetic Properties
- Better Productivity
- Customized Solution
- Complete Range of Grades and insulation Coating
- Superior Technology
- Well Connected Distribution Network Close to Customer





ALU Great Lakes
Aluminum Foil
39E501043
U.S. & CANADA
39E501043
U.S. & CANADA

JSW Special Alloy Steel

JSW Special Alloy Steel is produced at Salem Works, the largest primary integrated special alloy steel plant in India. With top-notch technological support, the flats and bars produced here are of the highest quality and can be used in a wide range of applications.

Available in various profiles - round bars, round-cornered squares in straight bars, round and hexagonal wire rods as coils, hexagonal and flat sections, straight bars, and bright bars (peeled/drawn/ground bars), the special steel alloys are revolutionary.

We have built a reputation for consistently producing superior products, with effortless customization, and on-time delivery, which makes us the preferred manufacturers for companies across sectors. Strategically located in Tamil Nadu, our plant supplies special steel to several leading auto industries in Hosur and Chennai, as well as the rest of the country.



Advantages

- Customized Products for Specific Needs
- Lower transportation costs owing to ace connectivity
- Minimum Lead-time from Order to Delivery







JSW Neosteel TMT Bars are one of India's leading TMT brand, known for their high quality and consistency. JSW Neosteel offers peace of mind not only to millions of house builders but also to leading infrastructure and commercial project companies across the world. JSW Neosteel TMT Bars manufactured through blast furnance route (BF-LHF-Billets-BRM-TMT) that ensures purity and premium quality. The state of art and world class bar rod mills used for production of JSW Neosteel are supplied from Danieli, Italy and Morgan, USA.

Manufactured from virgin iron ore in state-of-the-art rolling mills, every single running foot of JSW Neosteel TMT bars is free from impurities and has uniform properties.
Available in 500D, 550D, 600, 550D EDS, CRS.



Advantages

- Highest Level of Purity

Manufactured from iron ore, JSW Neosteel TMT bars have the highest grade of purity and lowest sulphur and phosphorous content, making it strong.

- Consistent Quality

The HYQST technology ensures a uniform quality across the bar. The proof is a perfect ring that can be seen across any cross-section of the bar.

- Best Bonding with cement - Best in Industry / Enhanced ribs

In case of RCC members, the tensile stresses from concrete are transferred to the steel reinforcement bars. The high tensile strength of steel complements the high compressive strength of concrete to result in a stable and safe Reinforced Cement Concrete structure.

- Transparent Pricing

JSW Neosteel End Consumer Price, promotes transparency and uniformity of value across the state.



T
25A

T
25



JSW Wire Rods are manufactured using cutting-edge technology at the Vijaynagar and Salem Works. These facilities produce wire rods in high, medium, and low carbon grades, as well as electrode and CHQ grades. The Salem Works specializes in alloy and special grade wire rods. The wire rod mills operate at high speeds (up to 120 mtr/sec) and ensure excellent mechanical and consistent chemical properties, with low sulfur and phosphorus content (0.005%-0.035%) and low tramp elements. Dimensional accuracy is guaranteed by an automated thickness control system using advanced numerical models.

The company's manufacturing facilities feature high-speed wire rod mills, India's largest blast furnace, and the widest hot strip mill. The plant utilizes paircross technology and a twin-stand reversible cold-rolling mill, achieving the highest productivity in India with 800-plus tonnes per person per annum. JSW is recognized for its 'zero-effluent discharge' status, reusing more than 95 percent of process waste, and maintains a low carbon footprint by recycling 96% of cokeoven gas for power generation. The plant also employs sophisticated ambient air control infrastructure to reduce gas flaring.

JSW Wire Rods are versatile and used in a variety of applications, including automobile manufacturing, infrastructure projects, railways, general engineering, spring applications, welding ropes, tools, heat treatment, machining, bearings, jewelry, cosmetics, and office and household equipment. The facilities are equipped with advanced reheating furnaces, descalers, Rod Tekisun mills, Stelmor conveyors, and compacting and strapping units, ensuring high-quality production.

The company's testing facilities include cold upset testing machines, universal testing machines, bend/rebend test machines, eddy current sorters, bench magnifiers, mobile spectro, micro ohm meters, stereo microscopes, Rockwell hardness testers, and metallurgical microscopes. JSW Steel Coated Products Ltd. is an ISO 9001:2008 Certified Organization, committed to producing high-quality steel products with a focus on sustainability. The company's zero-effluent discharge facilities, high recycling rates, and extensive tree planting initiatives contribute to a greener environment. JSW Wire Rods stand out for their superior quality, consistent properties, and wide range of applications, making them a preferred choice across various industries.

Advantages

- Key Features:
 - High-speed wire rod mills (110 mtr/sec)
 - Excellent mechanical and consistent chemical properties
 - Low sulfur and phosphorus content (0.005%-0.035%)
 - Low tramp elements
 - Dimensional accuracy guaranteed by an automated thickness control system using advanced numerical models
- Unique Advantages:
 - High-speed Wire Rod Mill (110 mtr/sec)
 - Low Sulfur and Phosphorus content (0.005% - 0.035%)
 - Low tramp elements
 - Excellent mechanical and consistent chemical properties





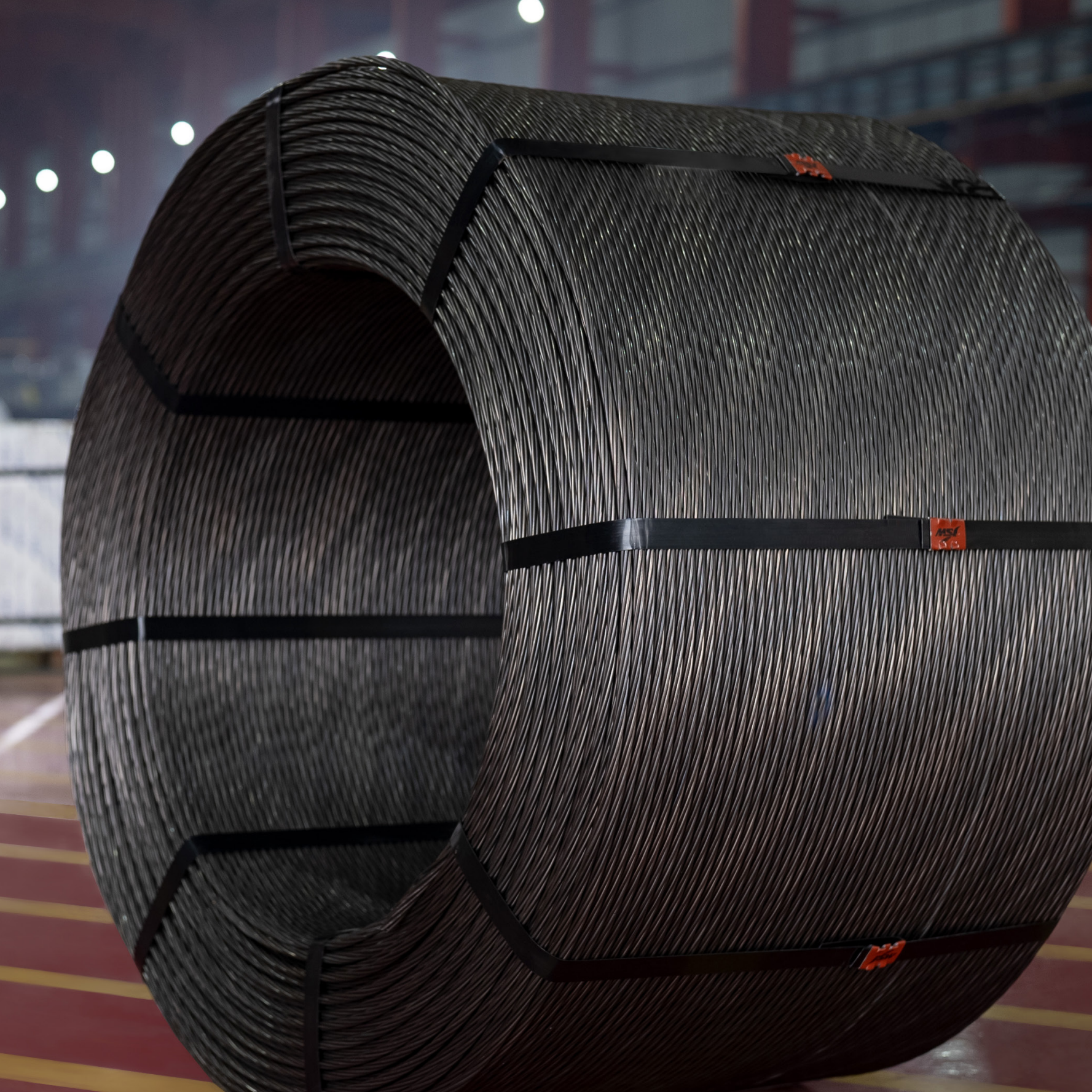
At JSW Steel, we are dedicated to propelling the nation's growth by consistently delivering world-class products. Our technologically advanced Low Relaxation Prestressed Concrete Strands (LRPC) underscores this commitment.

JSW Steel Limited is a leading supplier of technologically advanced LRPC strands in India and beyond. LRPC strands branded as JSW Neostrands, are manufactured at a state-of-the-art facility in Vijayanagar, Karnataka. Our strands are highly dependable and engineered to optimally function under challenging conditions across various sectors.

Our commitment to excellence has positioned us as a well-established supplier of LRPC strand in India and an emerging industry leader, with a focus on delivering world-class products. We have now expanded our reach to international markets. This milestone marks the beginning of our journey as a global supplier of high-performance LRPC strands.

JSW Steel has played a pivotal role in some of the most prestigious infrastructure projects in India, including

- Mumbai -Ahmedabad High -Speed Train (Bullet Train)
- Mumbai Metro
- Chennai Metro
- Bengaluru Metro
- RRTS
- WDFC
- Nagpur Samruddhi Mahamarg
- Delhi-Amritsar -Katra Expressway
- Dwarka Expressway
- Mumbai Coastal Road
- Ganga Expressway
- Chennai Ringroad Project etc.



Advantages

- Compared to normal steels, it has low-stress relaxation loss at normal and higher temperatures
- Cost reduction: 10-12% saving in overall construction cost of the project, which comes out through reduction in steel requirement, cement consumption, number of pillars, shuttering work, labour cost, faster project completion, etc.
- Longer spans greater than 25-30 meters can be constructed with the use of prestressed concrete strands
- Speed of construction: With the use of LRPC strands, the speed of construction increases significantly
- High reliability: The thermochemical forces applied during the manufacturing of strands ensures there with is no strand failure at the construction sites.
- 'Hot Stretching' of the strands give necessarily straight strands, which eliminates post straightening activity
- Higher fatigue resistance
- Lighter structures can be built with high reliability







JSW Steel Plant , Dolvi , Maharashtra

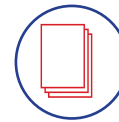
JSW Everglow is a premium and technologically advanced steel product designed to offer superior aesthetics and durability. What sets it apart is its unique bottom colour paint coating, making it India's first dual-sided colour-coated steel for consumers. With its enhanced visual appeal, JSW Everglow is the ideal choice for homeowners seeking both style and performance.



20 Year Warranty



Optimum Temperature Management



8 layers of protection



Colours on both Sides



ISI Approved



Anti-Corrosion



Aluminium-Zinc Galvalume Coating



Special High Grade Paint



JSW Colouon+ is a premium range of Al-Zn colour-coated sheets, designed for lasting beauty and strength. Available in a vibrant colour palette, its Al-Zn coating ensures durability in all weather conditions while maintaining its superior finish for years. Lightweight yet strong, it enables economical and efficient structural support.

Backed by a comprehensive 15-year warranty, JSW Colouon+ is available in three advanced variants—Hi-Gloss, Anti-Dust Hi-Gloss, and Cool Roof—each offering enhanced strength, shine, and extra protection for homes.



Cool Roof



High Gloss



Anti Dust



Easy to clean



Scratch proof



Verastility in application



Green pro certified



15 years warranty



JSW Pragati+ colour-coated sheets and profiles combine innovation with the inherent strength of steel to deliver superior roofing solutions. Made from galvalume steel, Pragati+ ensures long-lasting protection and higher economic value by reducing lifecycle costs.

Designed for an aspiring India, Pragati+ is backed by a 7-Year warranty. Its aesthetic appeal and durability offer both performance and style for modern structures



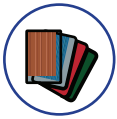
Aluminium Zinc Coating



Superior Strength



Environment friendly



Wide Range of Colours



All Weather Protection



Durable



Indradhanush offers pre-painted, high-quality roofing sheets that seamlessly blend innovation and strength. Designed to be economical, durable, and eco-friendly, it provides long-lasting protection while enhancing aesthetics. Available in a wide range of vibrant colors, Indradhanush is the perfect choice for both residential and commercial applications.



Weather Proof



Economical



Range of Colors



Eco friendly



Durable



High quality



JSW Silveron+ is a premium range of GL roofing sheets, engineered for exceptional durability and longevity. More effective and longer-lasting than conventional galvanized sheets, its Aluminium-Zinc-Silicon alloy coating provides superior corrosion resistance, ensuring lasting protection in diverse environments.

With its lightweight design, excellent heat reflectivity, and high resistance to rupture, JSW Silveron+ is an ideal solution for roofing and wall profiles across residential, commercial, and industrial projects. Backed by a 7-year warranty, it guarantees reliable performance and peace of mind for years to come.



Superior Corrosion Resistance



Excellent Heat Reflectivity



Green pro certified



Environmental Friendly



All Weather Protection



In the past two decades, Vishwas Premium GC Sheets have become synonymous with quality, durability, and reliability. Known for their right weight and uniform coating, Vishwas sheets offer long-lasting strength and protection.

With a longer standard length, Vishwas sheets minimize wastage, reduce the risk of compromising joints, and help lower labour costs. Designed for superior performance, they offer an efficient and cost-effective roofing solution for various applications.



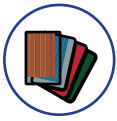
High strength



All-Weather protection



ISI Approved
(IS 277)



Wide product range



Longer Life



JSW Radiance is a superior colour-coated steel product featuring advanced paint technology for enhanced durability and long-lasting brilliance. Its specialized paint coating helps maintain radiance and luminosity, ensuring superior resistance to fading and shine retention over time.

Available in six durable variants—Anti-Microbial, Anti-Graffiti, Anti-Dust, Anti-Statics, Cool Roof, and High Gloss—JSW Radiance offers versatility across diverse applications in various industries. Designed for both aesthetics and performance, it delivers exceptional protection and lasting vibrancy in every environment.



Anti-Dust



Cool Roof



Anti Microbial



High Gloss



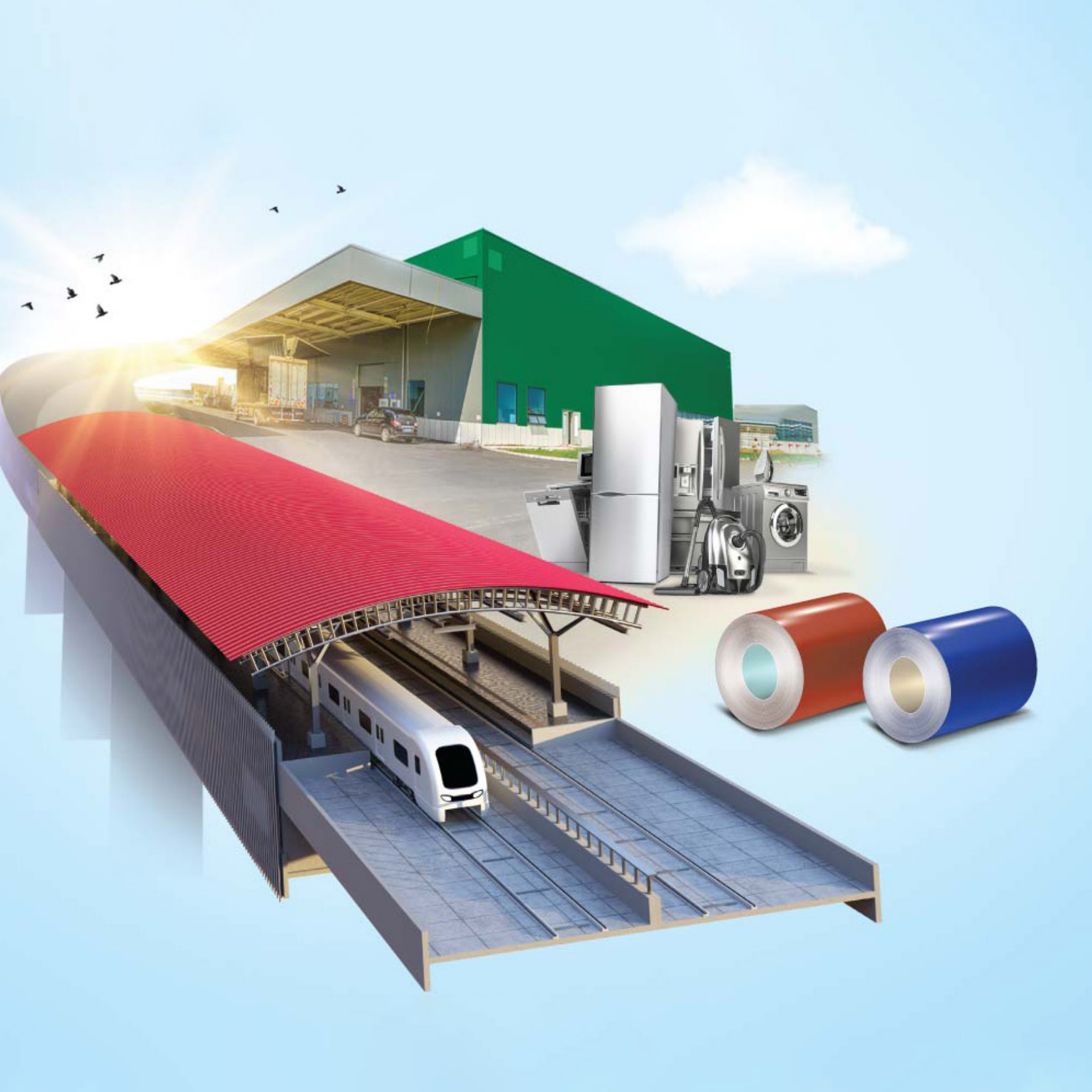
Better overall performance



Versatility in applications



Green pro certified



JSW Magsure is India's first patented Zn-Mg-Al coated steel, engineered for exceptional corrosion and chemical resistance. Its unique formulation makes it ideal for highly corrosive environments. Designed with an optimized alloy composition of Zinc, Magnesium, and Aluminium, JSW Magsure offers superior durability and sustainability, making it an environment-friendly choice. Its high corrosion resistant nature makes it the preferred solution for solar panel structures, greenhouses, grain silos, crash barriers, and other critical applications where long-lasting protection is essential.



High Chemical Resistance



Environment Friendly



Durable



Better Workability



High Corrosion Resistance



Patented product



JSW Platina is pioneering the future of sustainable, plastic-free packaging in India as the country's first continuously annealed tinplate product. This thin steel sheet is coated with tin on both sides through an electrolytic process, ensuring exceptional corrosion resistance, strength, and smoothness.

Designed for superior packaging performance, it offers long shelf life, UV & bacterial protection, and aroma & flavor retention, making it ideal for a wide range of applications. Its lightweight and indefinitely recyclable nature and versatile variants, including a lacquered version make it the perfect choice for sustainable and high-quality packaging solutions.



UV & Bacterial protection



Long shelf life



High Quality



Weather proof



Eco friendly



JSW Galvos represents a premium range of coils and sheets, engineered to redefine steel solutions for the solar sector. Made with branded BGL featuring liner marking of JSW Galvos, it ensures authenticity, superior performance, and durability.

Manufactured using patented Galvalume technology from BIEC International Inc., USA, JSW Galvos is designed to meet the mounting requirements of solar panels more efficiently and offers high corrosion resistance and long life. JSW Galvos also helps optimize per-wattage solar installation costs and reduce capital expenses, making it the ideal choice for sustainable energy infrastructure.



Uniform and Superior Coating Adhesion



High Performance



Durable



Environment friendly



JSW Galveco is a game-changing, zero-spangled galvanized steel, designed for superior performance and sustainability. As a lead-free, RoHS-compliant, and eco-friendly solution, it meets the highest safety and non-hazardous material standards.

It has zero-spangled surface which ensures enhanced corrosion resistance and a superior smooth finish, making it ideal for applications in AC Outdoor Units (ODU), refrigerators, fully automatic washing machines, electrical panels, elevators, and HVAC systems. With exceptional quality and durability, JSW Galveco sets a new benchmark in galvanized steel solutions for modern industries.



Uniform and Superior Coating Adhesion



Excellent Surface Finish And Flatness



Superior Paint Adhesion



Higher Corrosion Resistance



Avante is a smart and stylish door solution, seamlessly blending the strength of steel with the warmth of wood. Designed for durability and longevity, it offers a range of finishes and variants to suit diverse needs, including Plain Finish, Wooden Finish, Embossed Finish, Double Door with Grill and Mesh, and Fire Door options.

Engineered for superior protection, Avante is weatherproof, fire-resistant, termite-proof, and eco-friendly, ensuring long-term reliability. With an easy installation process, it eliminates common issues faced with traditional wooden doors, making it the perfect worry-free choice for modern homes..



Weather Proof



Termite Proof



Eco Friendly



Fire Resistant



Easy To Install





Mill Stand-2

Stand-3

Mill Stand-4

JSW
SRI VEEL. BOBATE

JSW
SRI VEEL. BOBATE

JSW
SRI VEEL. BOBATE

JSW
SRI VEEL. BOBATE

JSW
SRI VEEL. BOBATE

JSW
SRI VEEL. BOBATE

JSW
SRI VEEL. BOBATE



ESG

E

- Climate Change
- Energy
- Resources
- Water Resources
- Waste
- Waste Water
- Air Emissions
- Biodiversity
- Sustainable Mining
- Supply Chain Availability

S

- Indigenous People
- Cultural Heritage
- Employee Wellbeing
- Local Considerations
- Social Sustainability

G

- Business Ethics
- Human Rights
- Supply Chain

- 42% Emissions reduction by 2030
- 33% Reduction in water consumption by 2030
- 100% Waste recycling/ reutilisation by 2030
- 15% Reduction in energy consumption by 2030
- Zero Liquid Discharge (ZLD) across all locations



Climate
Change



Social
Sustainability



Human
Rights



Water
Resources



Biodiversity

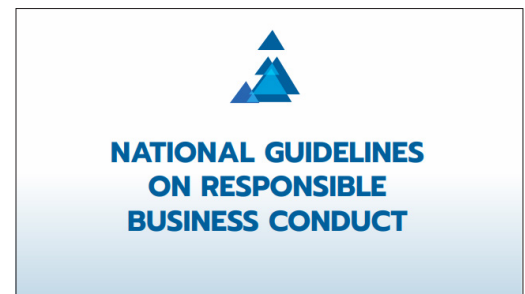
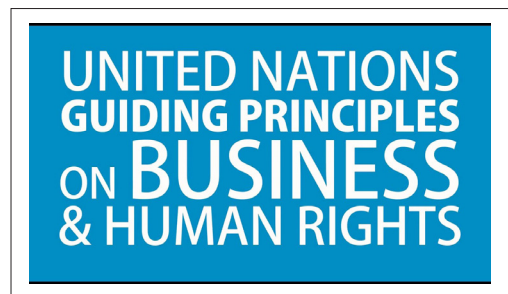


Energy

Driving sustainability initiatives across platforms



Aligned to national & international Driving sustainability initiatives across platforms frameworks



**Awards
& Recognition**



Steel Sustainability Champion for sixth consecutive year



Leadership rating for 4th consecutive year in Climate Change, 'A' rating in Water Security



Global Energy Transition Change makers Award for SEED Project



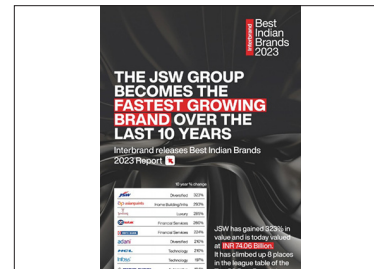
British Safety Council 5-star rating and Sword of Honor award



Included in the Dow Jones World and Emerging Markets Sustainability Indices



Awarded one of India's Best Workplaces for Women, Health and Wellness and Best Employers among Nation-Builders



JSW becomes fastest growing brand in India over the last 10 years - Interbrand



Received the Iconic Brands of India 2024 Award from ET NOW





Sales Office

AHMEDABAD

JSW steel Ltd.
Office No 501/502,Mondeal
Height B-Wing,
Lascon Cross road
Near Novotel Hotel
Opp Karnavati Club, S.G.Highway
Ahmedabad -380054
Mb:08128833390

AURANGABAD

JSW steel Ltd
Office no 306,3rd floor,05/1
A,B,C East Beside ,Prozone Mall
Chikaithana MIDC
Aurangabad

BANGALORE

JSW Steel
121, The Estate
3rd Floor, Dickenson Road
Bengaluru 560 042
TEL:08042448888

BHUBANESWAR

JSW steel Ltd
JSS STP ,2nd Floor , Block B
Infocity, Chandrasekharpur E -1/1
Bhubaneswar-751024
Tel: 0674-6658904

CHENNAI

JSW Steel Ltd Limited,
Olympia Cyber space,
Office Module 3, 10th Floor,
13th Level, 21/22,
Arulyammanpettai, 2nd Steer,
Alandur Road, Guindy,
Chennai 600032
TEL :044 69255300

COIMBATORE

JSW Steel Ltd.
211, 2nd Floor, Sathya Complex,
ESR Avenue Nr Post office,
TV Swamy Road (East),
Coimbatore - 541002

DELHI

JSW Steel Ltd.
4th Floor, NTH Complex,
A-2, Shaheed Jeet Singh Marg,
Qutub Institutional Area,
New Delhi - 110067
Tel: (011) 48178600

FARIDABAD

JSW Steel Ltd.
Nain Sadan,
Sector 20A,
Plot No- 35,
Near EF3 Mall,
Faridabad - 121001
Tel: (0129) 2239248, 2232387

GUWAHATI

JSW Steel Ltd.
6th Floor, Unique Avenue,
Front Side,
Opp. Fire Station,
Super Market,
Dispur, Guwahati - 781 005,

HUBLI

JSW Steel Ltd,
2nd Floor, Signature Mall,
Airport Road,
Gokul Road,
Hubli - 580030

HYDERABAD

JSW Steel Ltd.
Babu Khan Millenniums Centre,
7th Floor, Somajiguda,
Hyderabad -500082
Tel : (040) 27846669 / 79

INDORE

JSW Steel,
Unit no. 416, 4th Floor,
Princes' Business Skypark,
AB Road,
Indore-452010
TEL: 07312532156

JAIPUR

JSW Steel Ltd.' 3rd floor, 304-307,
Signature Tower,
Behind Police HQ,
Lal kothi, Tonk Phatak,
Jaipur- 302015 (Rajasthan)
Tel: (0141) 4629200

KOCHI

JSW Steel Ltd.
34/138L3, New No 41/150A3,
2nd Floor,
Above Dhe Puttu Restaurant
Service Road NH By-pass
Edapally, Kochi , Kerala 682024

KOLKATA

JSW Steel Ltd.
Godrej Waterside,
10th Floor, Tower - 1
Unit No 1003,
Plot- DP-5 Sector V,
Salt Lake City
Kolkata - 700091
Tel : (033) 40002020

LUCKNOW

JSW Steel,
Vishal Singh Srinet Office No. 708 -710,
7th floor, Shalimar Titanium,
Mandi Parishad Rd,
Opp. Indira Gandhi Pratishthan Vijaipur
Colony, Vibhuti Khand, Gomti Nagar,
Lucknow, UP - 226010
TEL : 05226902300

LUDHIANA

JSW Steel Ltd.,
1st Floor, JSW BPSL Complex,
B-29/542 , G.T Road ,
Dhandari Kalan ,
Ludhiana (Punjab) 141014

MUMBAI

JSW Steel Ltd
JSW Centre ,Bandra Kurla Complex
Bandra East
Mumbai-400051
Mb: 022-42863000

NAGPUR

JSW Steel Ltd.
L&T Building,
3rd Floor (Back Side),
Plot No: 12,
Shivaji Nagar,
Nagpur: 440 010

NAVI MUMBAI

JSW Steel Ltd.
1101-1102 a 1704-1707,
17th Floor, Plot No. 4 a 6,
Greenscape Cyber One,
Sector 30 A, Vasi,
Navi Mumbai - 400 705
Tel : 022 69337000

NOIDA

JSW Steel Ltd.
Trapezoid, C-27, 9th Floor,
Sector-62, Noida,
Uttar Pradesh

PATNA

JSW Steel Ltd.
Sai Tower, 3rd Floor,
Rekha House,
New Oak Banglow Road,
Patna - 800 001
Tel : 0612 - 6696205

PUNE

The Metropolitan,
FP No 27,
Survey No 21,4th Floor,
Ekta Park Society,
Sagar Society,Wakdewadi,
Shivajinagar, Pune,
Maharashtra - 411003
TEL: 020-66662300

VIJAYWADA

JSW Steel Ltd
VRN House Corporate,
2nd Floor, 38-4-12,
Opp All India Radio,
Beside MG Road,
Punnamma Thota,
Vijaywada - 520010
TEL: 0866 2720500



Head Office:

JSW Centre, Bandra Kurla Complex,
Bandra (E), Mumbai - 400 051, India
Tel.: +91 22 42861000
www.jswsteel.in

—



Scan here for website